



ECO.OPALA sets a new standard for water efficiency and sustainable production in flushing cisterns accessible to all markets.





**100%**  
RECYCLED PS



**FSC**  
SUSTAINABLE COLLECTION



SAVE UP TO  
**DUAL  
FLUSH**



SAVE UP TO  
**0.5 LITRES**  
OF WATER PER FLUSH

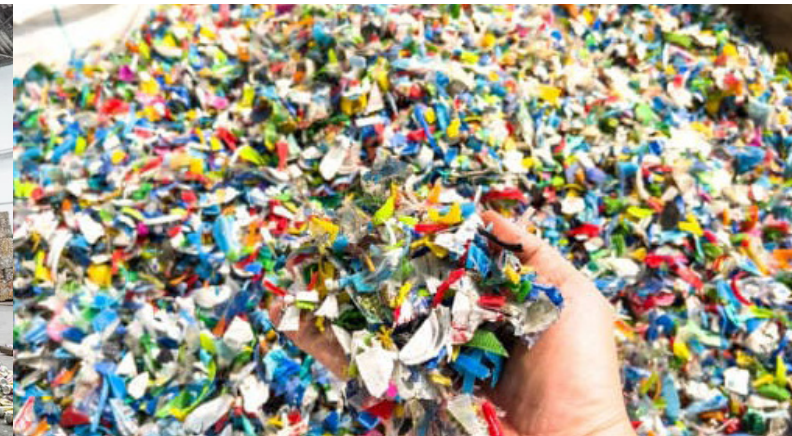
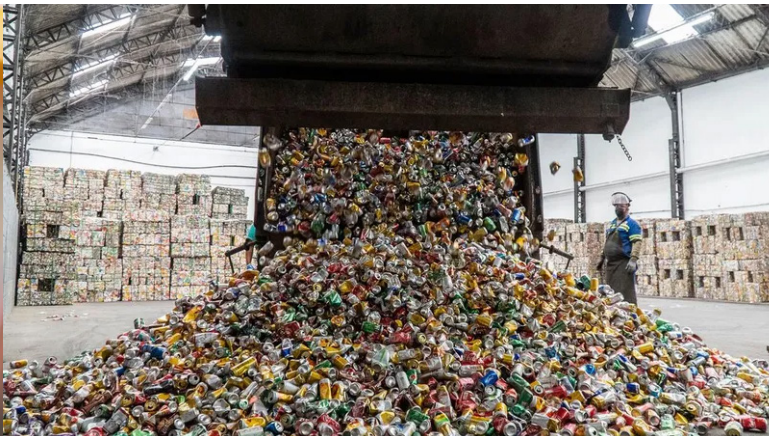


**WITHOUT PAPER**  
INSTRUCTIONS ON THE BOX,  
LESS PAPER CONSUMPTION

Of circular origin, obtained from the collection of post-consumer plastic waste (99 per cent) which is transformed into recycled raw material.



**100%**  
RECYCLED PS





OLI

ECO.OPALA



# Designed to save water.



**DUAL  
FLUSH**



SAVE UP TO  
**0.5 LITRES**  
OF WATER PER FLUSH





OLI

AUTOCLISMO EXTERIOR | EXPOSED FLUSH CISTERN  
APLICACAO UNIVERSAL | UNIVERSAL APPLICATION

OLI



ECO.OPALA

PS PRETO 100% RECICLADO | 100% RECYCLED BLACK PS | 100% RECICLATO  
PS NOIRO | PS PRETO 100% RECICLADO | 100% RECYCLES SCHWARZ PS







# Environmentally friendly.



**FSC**  
SUSTAINABLE COLLECTION



**WITHOUT PAPER**  
INSTRUCTIONS ON THE BOX,  
LESS PAPER CONSUMPTION



**BIO - COMPOSTÁVEL**  
BIO - COMPOSTABLE FIBRE BAG





OLI-Sistemas Sanitários, S.A.  
Travessa do Milhão, 10 Esgueira  
3800-314 Aveiro, Portugal

T (+351) 234 300 200

F (+351) 234 300 212

[www.oli-world.com](http://www.oli-world.com)

[export@oli-world.com](mailto:export@oli-world.com)

Inspired by water...

