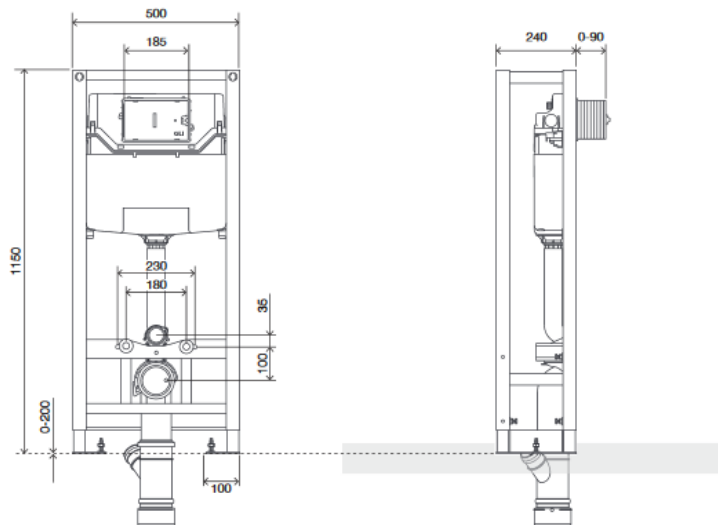


Technical Sheet

DOUBLE FRAME
WC|Urinal/Washbasin



Product Identification

882618 • Double Frame WC|Urinal/Washbasin

Definition and Application

- Preassembled structure to be secured to the floor only for the installation in light walls
- Compatible with all wall-hung WC pans
- Wall hung toilets up to 660mm long
- Compatible with all wall hung Urinals or Washbains
- Frame for back to back wall-hung WC pan and Urinal or Washbasin
- Suitable for commercial applications

Technical Features

Structure

- In painted tubular with 1,5mm thickness corrosion resistant
- Height adjustable from 0 to 200mm
- Depth adjustable outlet bend
- Tested for 400kg load

Cistern

- Dual flush in-wall cistern compatible with either dual or single flush actuators 6/3 litres
- Mechanic actuation
- Working pressure from 0,1 to 16 bar
- Resistance to atmospheric humidity (Hr <90%).
- Polypropylene (PP) cistern highly resistant and inalterable to thermal stress
- EN 14055 marking CL1
- Equipped with Azor Plus Inlet Valve, with delayed refilling (saves up to 9 litres of water per day) and silent according to the NF standard category Class I
- Supplied with anti-condensation lining
- "A" class for the Water Efficiency in compliance with the ANQIP Authority requirements

Millimetres measures

Technical Sheet

DOUBLE FRAME
WC|Urinal/Washbasin



Accessories

- 1 Discharge pipe \varnothing 90 x 250
- 1 Seal for discharge \varnothing 125
- 1 Connecting pipe \varnothing 45
- 1 Pan rubber seal \varnothing 45
- 1 Protective box
- 1 G 1/2" stop valve
- 1 Protection sponge for the stop valve
- 1 "Y" outlet bend \varnothing 90/110 and \varnothing 40 for washbasin or urinal
- 1 Discharge pipe \varnothing 45 x 260mm
- 1 Protection pipe \varnothing 110

Fixing accessories for floor structure

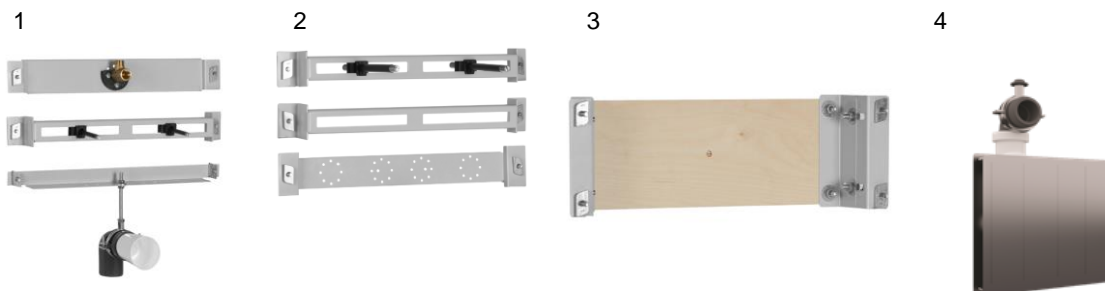
- 6 Bushing M10 for metal structure

Fixing accessories for hung wc mounting on the structure:

- 2 Threaded rods M12
- 2 Nuts M12
- 2 Protection for threaded rod
- 2 Protection cover
- 2 Toilet centring washer
- 2 Washers Zn \varnothing 34

Accessories can be purchase separately

- (1) 882612- Urinal Kit
- (2) 882613- Washbasin Kit
- (3) 881858- Wall Tap or Concealed Urinal Flush Valve Kit
- (4) 883081- Hidden Siphon



Warranty

- Ten (10) years warranty according to the general selling terms, starting from the purchase date of the product.
- If the product is not correctly installed the warranty is not valid

Observations

There are available similar products. For more information please consult our Sanitary Installation Systems catalogue or our site www.oli-world.com

Millimetres measures